

Mpls  
St Paul  
MAGAZINE

# Home

YOUR GUIDE TO LOCAL DESIGN

SPRING 2010 MSPMAG.COM

## 2 Lakes

CALHOUN CHIC

## 2 Takes

ISLES ECLECTIC



**ASID  
SHOWCASE  
HOME TOUR**

May 15–June 13



Supplement to Mpls.St.Paul Magazine



The guest suite channels the Blue Zone of Okinawa, Japan.

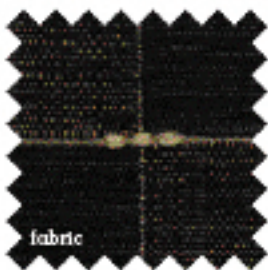
Woven natural shades add to the guest suite's global look.

The colors in the guest bath promote relaxation.

Brunswick Beige

[sink finish]

[sink countertop finish]



ASID  
SHOWCASE  
HOMETOUR  
10

SPACE

05

ISLES

## Guest Suite

HIGHLIGHT

The area rug from Cyrus Rugs has a chocolate background and black border with a large-scale floral pattern.

The guest bedroom became a Japanese-themed room when the homeowner requested two twin low-profile tatami beds, finished in walnut. He has traveled to Japan and is drawn to the simple, elegant styling and customs of the country's homes. One centenarian woman he visited in Okinawa, Japan, always sat on a tatami mat, which afforded her great balance. In his book, *The Blue Zones*, Buettner writes about one of his visits to her home: "The room has a feeling of timeless congeniality." The guest suite is as congenial as one of the homes in the Okinawa Blue Zone because of its pleasing aesthetic. Satin duvet covers in burgundy by Scandia Down add bold hues to the room to create richness and intensity. Burgundy and gold floral shams provide a focal point. The guest bath has a dark navy and black floor tile with a Mediterranean mosaic pattern as an accent. Custom cabinetry and a flush mirror framed with the Mediterranean mosaics are built into a niche that was previously floor-to-ceiling cabinets. To add shape and texture, a rustic three-light fixture from Filament Lighting is placed in the mirror.

DESIGNER



**Charlene Ackley**  
ASID Member  
ASID  
Charlene Ackley  
Interior Design  
Plymouth  
763-242-5555

**Contractor**  
Vujovich Design  
Build

**Architect**  
Polarissen/Kellar  
Architecture

FIND IT

From IMS:  
Art—Art Resource Gallery  
Countertop and Tub Deck—Cambria  
Fabrics for Drapery, Pillow Shams, Shower Curtain, Bathroom Window Treatment—Krovat

Outside IMS:  
Area Rug—Cyrus Rugs  
Custom Vanity—Eull Woodworks  
Drapery Workroom—Changing Scenes by Marlene  
Lighting—Filament Lighting  
Low Profile Platform Beds—

Farm Order, California  
Mattress—HOM  
Mirror—Minneapolis Glass  
Paint—Benjamin Moore  
Plumbing Fixtures—Pipeline Supply  
and Kohler  
Side Tables, Accessories—Alasda, Inc. and Sun Gallery

Tile—Rubble Tile  
Galleria Accessories  
Scandia Down, Restoration Hardware  
"Donated"

SAMPLES: MICHAEL HENDERSON; PARTISANAL; GEORGE CORNELL; SENG; COURTESY OF KELLAR



FLOOR 2

The indigo bed linens, fish-print shams, and sea urchin-pattern pillows complement the luxurious bed linens by Designers Guild.

The windows feature exquisite hand-woven coverings of sustainable natural fibers.



Montsey White

Shalburne Buff

ASID  
SHOWCASE  
HOMETOUR  
10

SPACE

06

ISLES

## Master Suite

HIGHLIGHT

The fully remodeled master suite is designed around the Blue Zone of Okinawa, Japan.

The master suite faces west to embrace the sunset. A comfortable chair and ottoman is a natural spot to write and sip green tea. Hand-woven window shades filter the sunlight without blocking the view. The homeowner's hand-carved ebony lacquered sleigh bed is complemented by an aged crackled-blue nightstand and an Asian antique. Modern spherical lamps in silver and clear glass are available for reading. Stencils accent the room's walls, which open onto a new porch with an herb and vegetable garden and sunlight for healthy living.

The master bath's understated bamboo artisan wall finishes; indigo, black, and tan tiles; and contemporary polished fixtures make a quiet statement. Horizontal polished floating countertops and a vertical paneled shower by Cambria provide contrast in form and shape.

Neutral wall tile is accented with a thin vertical stone trim and ribbons of blue glass, reminiscent of hiking on a precipice with water below. Custom cabinets crafted of quarter-sawn red oak add warmth and character while providing ample storage and functionality.

DESIGNER



**Angela Parker**  
ASID  
Interior Places  
and Spaces,  
LLC  
St. Louis Park  
952-451-1960  
aparker-ips.com

**Contractor**  
Vujovich Design  
Build

**Architect**  
Polarissen/Kellar  
Architecture

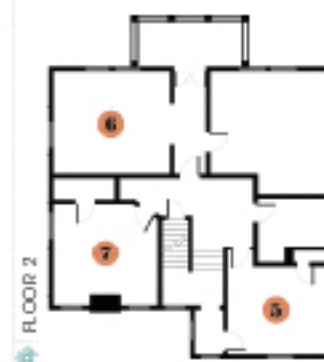
FIND IT

From IMS:  
Accessories—Francis King, Ltd.  
Bed Linens—Schuyler Westphal  
Blinds—Contemporary Blind Design  
Carpet—Stark  
Carpet Corporation  
Countertop—Cambria

Fabrics—Lee Jaffe  
Furnishings—Zachary  
Furnishings and Fabrics—Krovat  
Outside IMS:  
Artisan Paint Finishes—Painted Ambiance  
Custom Cabinetry—Eull Woodworks  
Drapery Workroom, Custom

Bedding—Accent Drapery  
Fixtures—Pipeline Supply (Kallista)  
Lighting—Filament Lighting  
Paint—Benjamin Moore  
Plants—Morr's Landscaping  
Tile—Rubble Tile  
Windows—Marvin Windows and Doors

Galleria Accessories  
Art Resource Gallery, Good Earth, Hammer Made, Origami, Restoration Hardware, Three Rooms  
"Donated"



FLOOR 2